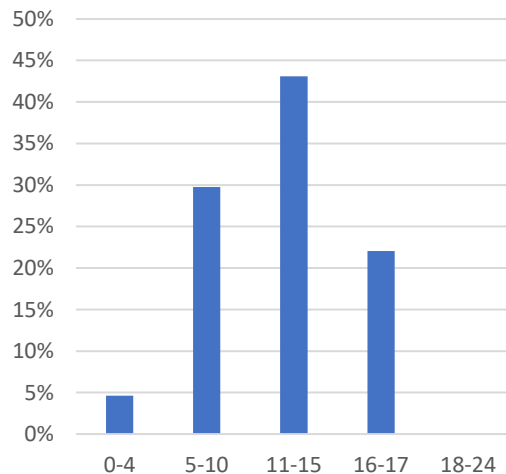




# Abingdon (Group 1)

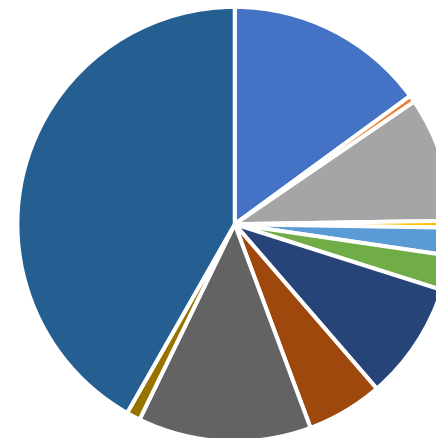
AGE	CYP	%
0-4	9	5%
5-10	58	30%
11-15	84	43%
16-17	43	22%
18-24	0	0%
<b>Total</b>	<b>195</b>	<b>100%</b>

Abingdon Age ranges



- Autistic Spectrum Disorder
- Hearing Impairment
- Moderate Learning Difficulty
- Multi-Sensory Impairment
- Physical Disability
- Profound & Multiple Learning Difficulty
- Severe Learning Difficulty
- Specific Learning Difficulty
- Speech, Language and Communication Needs
- Visual Impairment
- Unknown

Abingdon SEN



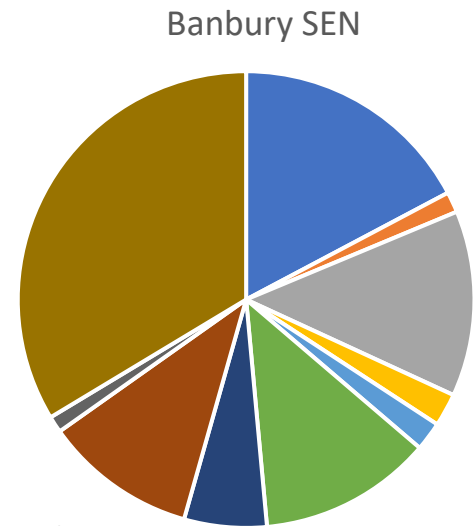
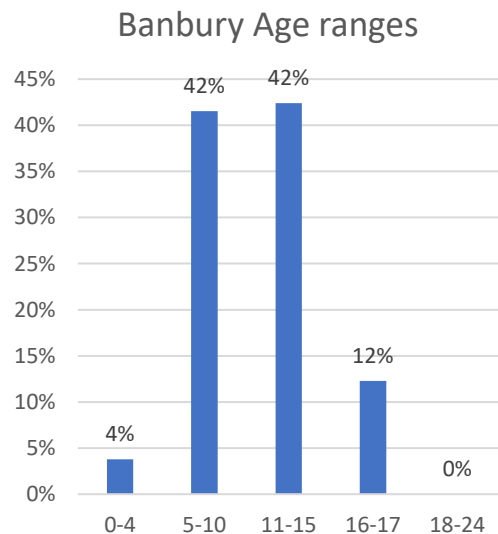
Autistic Spectrum Disorder	29	15%
Hearing Impairment	1	1%
Moderate Learning Difficulty	18	9%
Multi-Sensory Impairment	1	1%
Physical Disability	4	2%
Profound & Multiple Learning Difficulty	5	3%
Severe Learning Difficulty	17	9%
Specific Learning Difficulty	11	6%
Speech, Language and Communication Needs	25	13%
Visual Impairment	2	1%
Unknown	81	42%
<b>Grand Total</b>	<b>194</b>	<b>100%</b>

195 total CYP of these 89 are in special school, 43 of these have unknown disability on the register



# Banbury (Group 1)

AGES	CYP	%
0-4	13	4%
5-10	142	42%
11-15	145	42%
16-17	42	12%
18-24	0	0%
<b>Total</b>	<b>342</b>	<b>100%</b>



- Autistic Spectrum Disorder
- Moderate Learning Difficulty
- Profound & Multiple Learning Difficulty
- Specific Learning Difficulty
- Visual Impairment
- Hearing Impairment
- Physical Disability
- Severe Learning Difficulty
- Speech, Language and Communication Needs
- Unknown

Autistic Spectrum Disorder	59	17%
Hearing Impairment	5	1%
Moderate Learning Difficulty	45	13%
Physical Disability	8	2%
Profound & Multiple Learning Difficulty	7	2%
Severe Learning Difficulty	42	12%
Specific Learning Difficulty	20	6%
Speech, Language and Communication Needs	37	11%
Visual Impairment	4	1%
Unknown	115	34%
<b>Grand Total</b>	<b>342</b>	<b>100%</b>

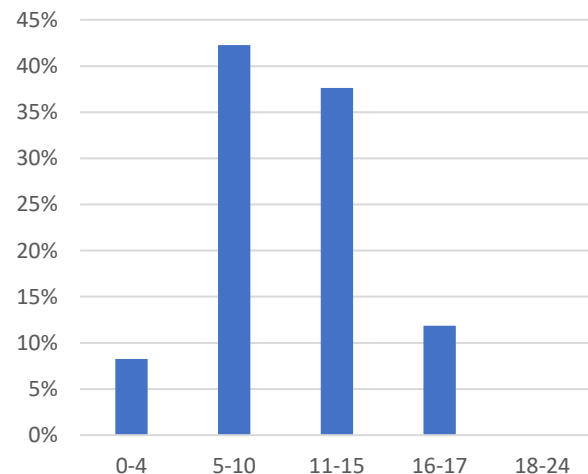
342 total CYP of these 157 are in special school, 72 of these have unknown disability on the register



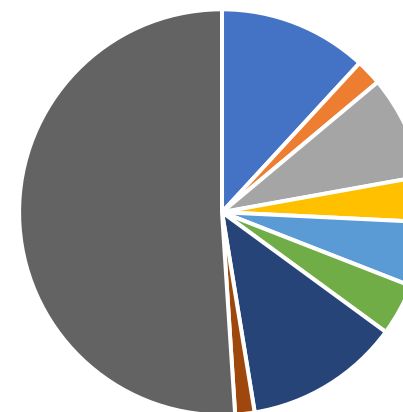
# Bicester (Group 1)

AGES	CYP	%
0-4	16	8%
5-10	82	42%
11-15	73	38%
16-17	23	12%
18-24	0	0%
Total	194	100%

Bicester Age ranges



Bicester SEN



- Autistic Spectrum Disorder
- Moderate Learning Difficulty
- Severe Learning Difficulty
- Speech, Language and Communication Needs
- Unknown
- Hearing Impairment
- Physical Disability
- Specific Learning Difficulty
- Visual Impairment

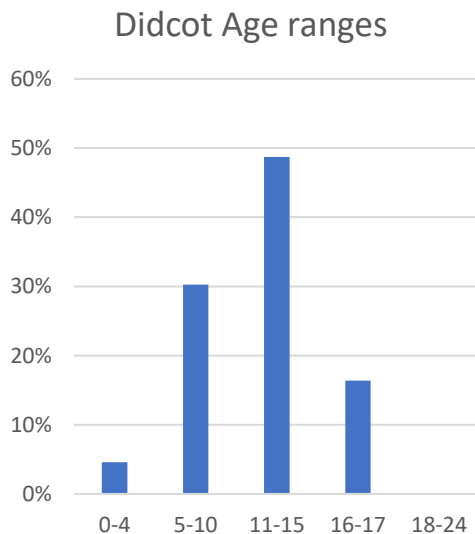
Autistic Spectrum Disorder	23	12%
Hearing Impairment	4	2%
Moderate Learning Difficulty	16	8%
Physical Disability	7	4%
Severe Learning Difficulty	10	5%
Specific Learning Difficulty	8	4%
Speech, Language and Communication Needs	24	12%
Visual Impairment	3	2%
Unknown	99	51%
Grand Total	194	100%

192 total CYP of these 96 are in special school, 60 of these have unknown disability on the register

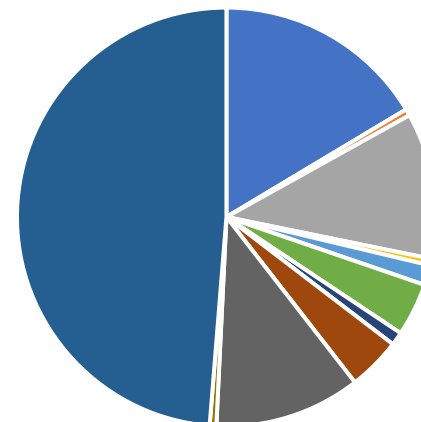


# Didcot (Group 1)

AGE	CYP	%
0-4	9	5%
5-10	59	30%
11-15	95	49%
16-17	32	16%
18-24	0	0%
<b>Total</b>	<b>195</b>	<b>100%</b>



Didcot SEN



- Autistic Spectrum Disorder
- Hearing Impairment
- Moderate Learning Difficulty
- Physical Disability
- Profound & Multiple Learning Difficulty
- Severe Learning Difficulty
- Social, Emotional and Mental Health
- Specific Learning Difficulty
- Speech, Language and Communication Needs
- Visual Impairment
- Unknown

Autistic Spectrum Disorder	32	16%
Hearing Impairment	1	1%
Moderate Learning Difficulty	22	11%
Physical Disability	1	1%
Profound & Multiple Learning Difficulty	3	2%
Severe Learning Difficulty	8	4%
Social, Emotional and Mental Health	2	1%
Specific Learning Difficulty	8	4%
Speech, Language and Communication Needs	22	11%
Visual Impairment	1	1%
Unknown	95	49%
<b>Grand Total</b>	<b>195</b>	<b>100%</b>

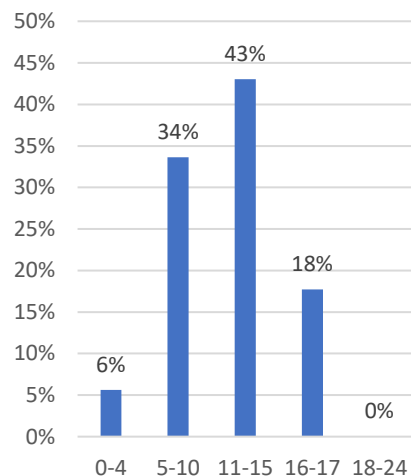
195 total CYP of these 89 are in special school, 46 of these have unknown disability on the register



# Oxford City (Group 1)

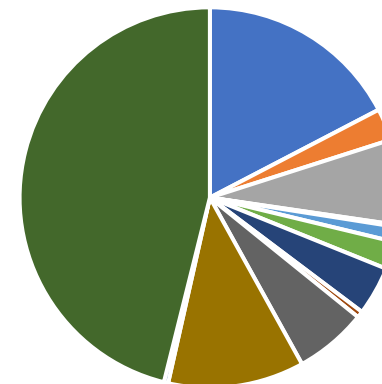
AGE	CYP	%
0-4	31	6%
5-10	186	34%
11-15	238	43%
16-17	98	18%
18-24	0	0%
<b>Total</b>	<b>553</b>	<b>100%</b>

Oxford Age ranges



553 total CYP of these 205 are in special school, 104 of these have unknown disability on the register

Oxford SEN



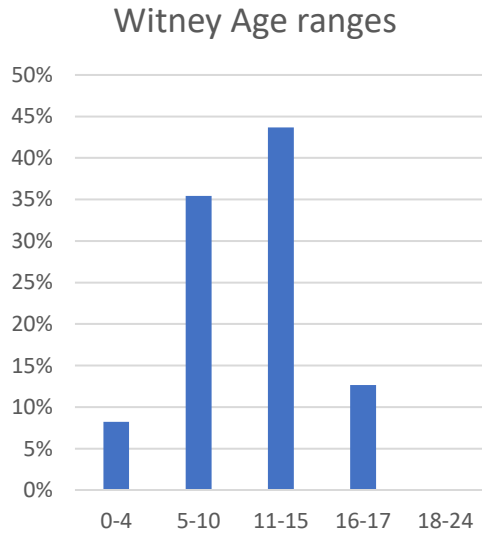
- Autistic Spectrum Disorder
- Hearing Impairment
- Moderate Learning Difficulty
- Multi-Sensory Impairment
- Physical Disability
- Profound & Multiple Learning Difficulty
- Severe Learning Difficulty
- Social, Emotional and Mental Health
- Specific Learning Difficulty
- Speech, Language and Communication Needs
- Visual Impairment
- Unknown

Autistic Spectrum Disorder	96	17%
Hearing Impairment	15	3%
Moderate Learning Difficulty	40	7%
Multi-Sensory Impairment	1	0%
Physical Disability	7	1%
Profound & Multiple Learning Difficulty	13	2%
Severe Learning Difficulty	23	4%
Social, Emotional and Mental Health	3	1%
Specific Learning Difficulty	34	6%
Speech, Language and Communication Needs	64	12%
Visual Impairment	2	0%
Unknown	255	46%
<b>Grand Total</b>	<b>553</b>	<b>100%</b>

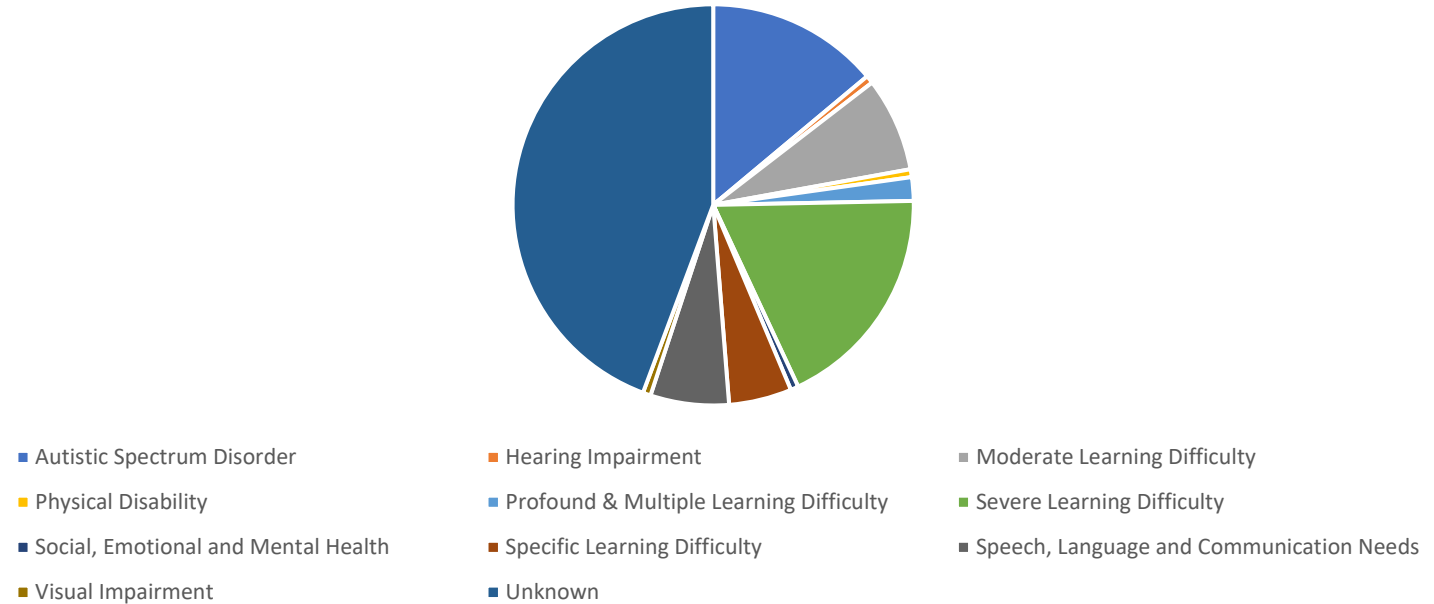


# Witney (Group 1)

AGE	CYP	%
0-4	13	8%
5-10	56	35%
11-15	69	44%
16-17	20	13%
18-24	0	0%
<b>Total</b>	<b>158</b>	<b>100%</b>



Witney SEN



158 total CYP of these 77 are in special school, 25 of these have unknown disability on the register

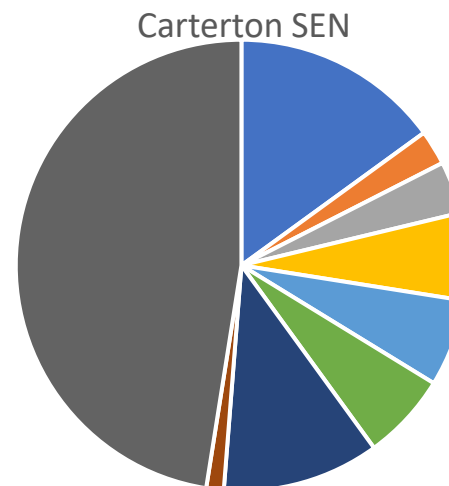
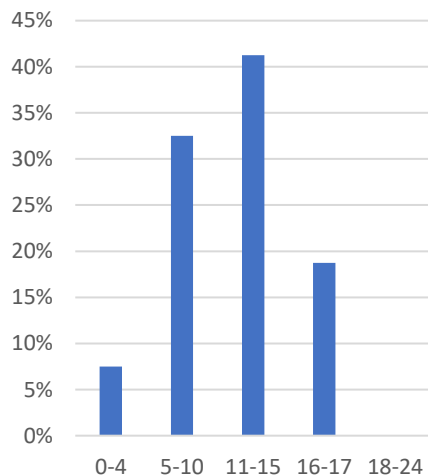
Autistic Spectrum Disorder	22	14%
Hearing Impairment	1	1%
Moderate Learning Difficulty	12	8%
Physical Disability	1	1%
Profound & Multiple Learning Difficulty	3	2%
Severe Learning Difficulty	29	18%
Social, Emotional and Mental Health	1	1%
Specific Learning Difficulty	8	5%
Speech, Language and Communication Needs	10	6%
Visual Impairment	1	1%
Unknown	70	44%
<b>Grand Total</b>	<b>158</b>	<b>100%</b>



# Carterton (Group 2)

AGE	CYP	%
0-4	6	8%
5-10	26	33%
11-15	33	41%
16-17	15	19%
18-24	0	0%
<b>Total</b>	<b>80</b>	<b>100%</b>

Carterton Age ranges



- Autistic Spectrum Disorder
- Moderate Learning Difficulty
- Severe Learning Difficulty
- Speech, Language and Communication Needs
- Unknown
- Hearing Impairment
- Physical Disability
- Specific Learning Difficulty
- Visual Impairment

Autistic Spectrum Disorder	12	15%
Hearing Impairment	2	3%
Moderate Learning Difficulty	3	4%
Physical Disability	5	6%
Severe Learning Difficulty	5	6%
Specific Learning Difficulty	5	6%
Speech, Language and Communication Needs	9	11%
Visual Impairment	1	1%
Unknown	38	48%
<b>Grand Total</b>	<b>80</b>	<b>100%</b>

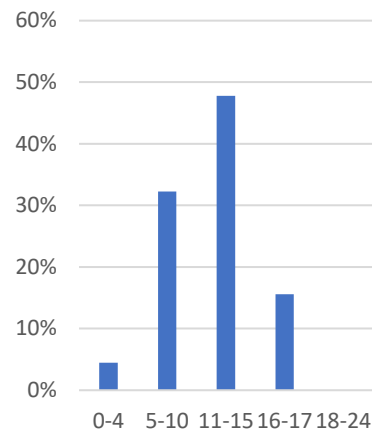
80 total CYP of these 31 are in special school, 17 of these have unknown disability on the register



# Faringdon (Group 2)

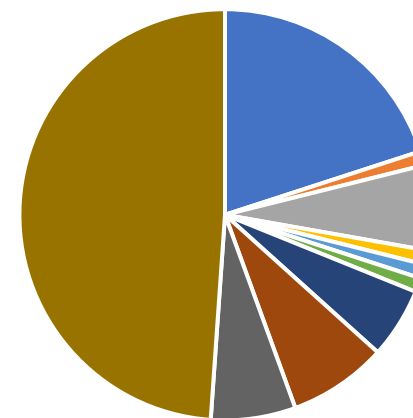
AGE	CYP	%
0-4	4	4%
5-10	29	32%
11-15	43	48%
16-17	14	16%
18-24	0	0%
Total	90	100%

Faringdon Age ranges



- Autistic Spectrum Disorder
- Multi-Sensory Impairment
- Severe Learning Difficulty
- Unknown

Faringdon SEN



- Hearing Impairment
- Physical Disability
- Specific Learning Difficulty
- Moderate Learning Difficulty
- Profound & Multiple Learning Difficulty
- Speech, Language and Communication Needs

Autistic Spectrum Disorder	18	20%
Hearing Impairment	1	1%
Moderate Learning Difficulty	6	7%
Multi-Sensory Impairment	1	1%
Physical Disability	1	1%
Profound & Multiple Learning Difficulty	1	1%
Severe Learning Difficulty	5	6%
Specific Learning Difficulty	7	8%
Speech, Language and Communication Needs	6	7%
Unknown	44	49%
Grand Total	90	100%

90 total CYP of these 23 are in special school, 13 of these have unknown disability on the register

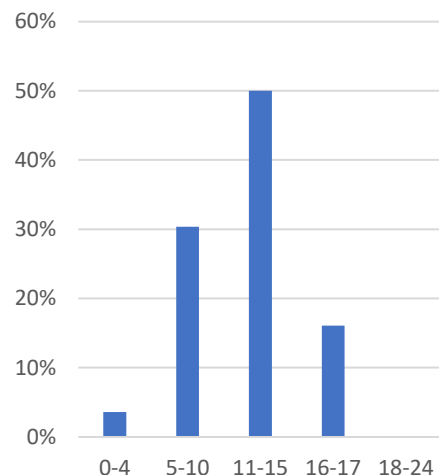




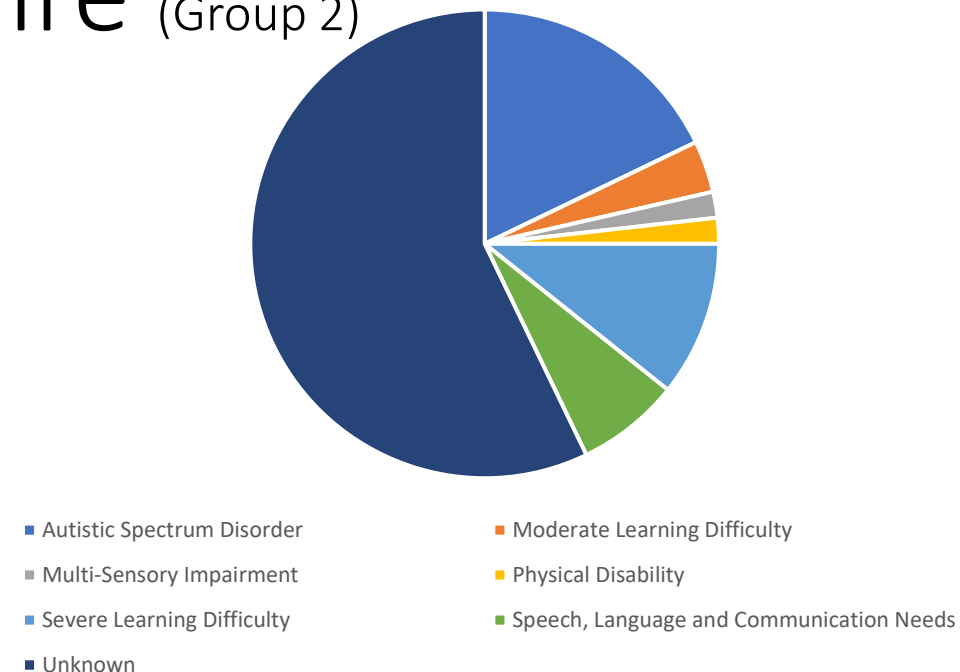
# Henley / South-East Oxfordshire (Group 2)

AGE	CYP	%
0-4	2	4%
5-10	17	30%
11-15	28	50%
16-17	9	16%
18-24	0	0%
Total	56	100%

Henley Age ranges



Henley SEN



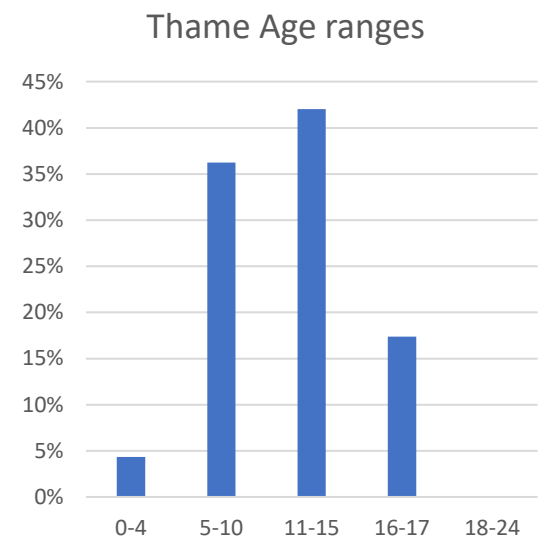
56 total CYP of these 18 are in special school, 11 of these have unknown disability on the register

Autistic Spectrum Disorder	10	18%
Moderate Learning Difficulty	2	4%
Multi-Sensory Impairment	1	2%
Physical Disability	1	2%
Severe Learning Difficulty	6	11%
Speech, Language and Communication Needs	4	7%
Unknown	32	57%
Grand Total	56	100%



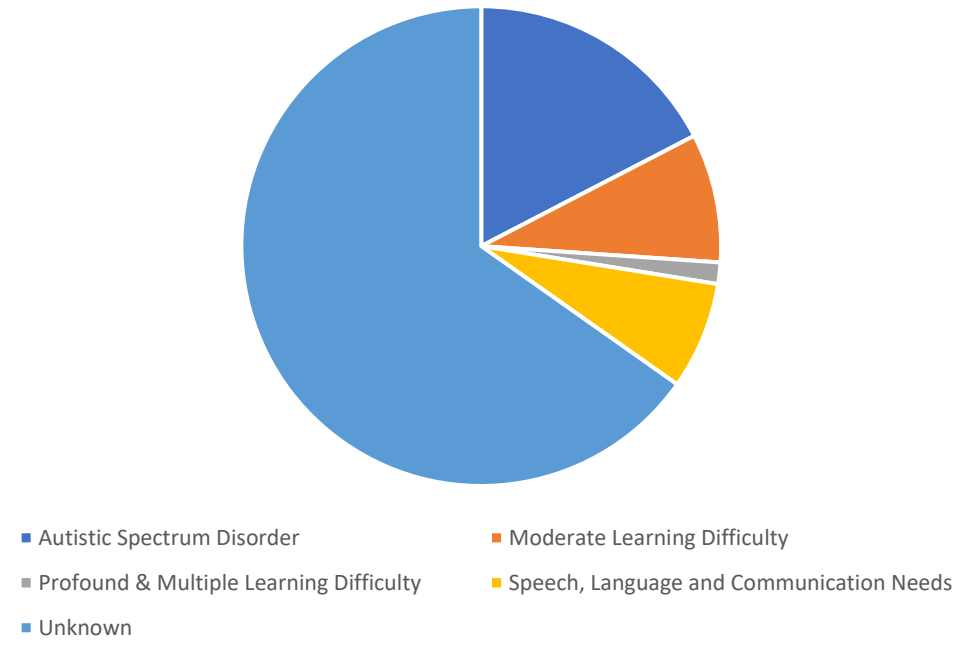
# Thame (Group 2)

AGE	CYP	%
0-4	3	4%
5-10	25	36%
11-15	29	42%
16-17	12	17%
18-24	0	0%
Total	69	100%



69 total CYP of these 35 are in special school, 18 of these have unknown disability on the register

Thame SEN

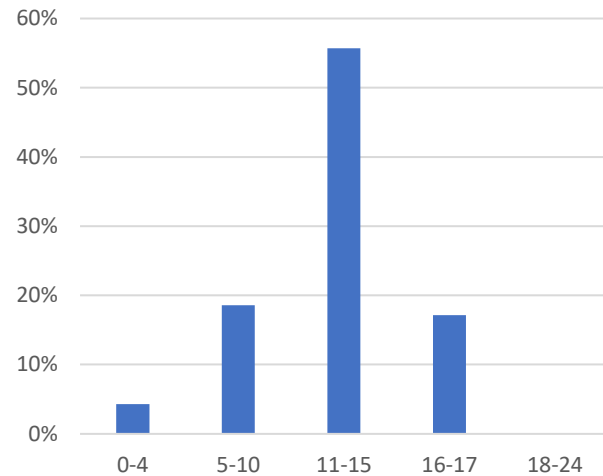


Autistic Spectrum Disorder	12	17%
Moderate Learning Difficulty	6	9%
Profound & Multiple Learning Difficulty	1	1%
Speech, Language and Communication Needs	5	7%
Unknown	45	65%
Grand Total	69	100%



# Wantage (Group 2)

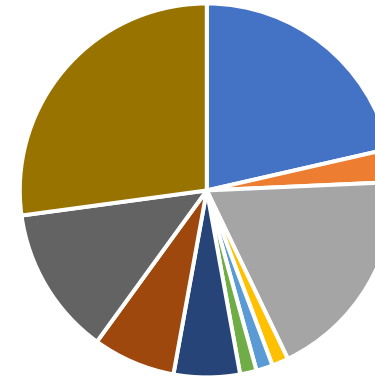
Wantage Age ranges



AGE	CYP	%
0-4	3	4%
5-10	13	19%
11-15	39	56%
16-17	12	17%
18-24	0	0%
<b>Total</b>	<b>70</b>	<b>100%</b>

70 total CYP of these 28 are in special school, 7 of these have unknown disability on the register

Wantage SEN



- Autistic Spectrum Disorder
- Hearing Impairment
- Moderate Learning Difficulty
- Multi-Sensory Impairment
- Physical Disability
- Profound & Multiple Learning Difficulty
- Severe Learning Difficulty
- Specific Learning Difficulty
- Speech, Language and Communication Needs
- Unknown

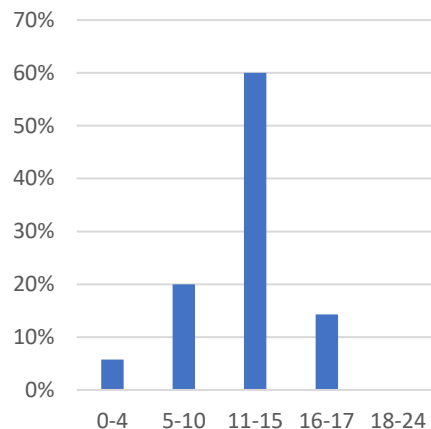
Autistic Spectrum Disorder	15	21%
Hearing Impairment	2	3%
Moderate Learning Difficulty	13	19%
Multi-Sensory Impairment	1	1%
Physical Disability	1	1%
Profound & Multiple Learning Difficulty	1	1%
Severe Learning Difficulty	4	6%
Specific Learning Difficulty	5	7%
Speech, Language and Communication Needs	9	13%
Unknown	19	27%
<b>Grand Total</b>	<b>70</b>	<b>100%</b>



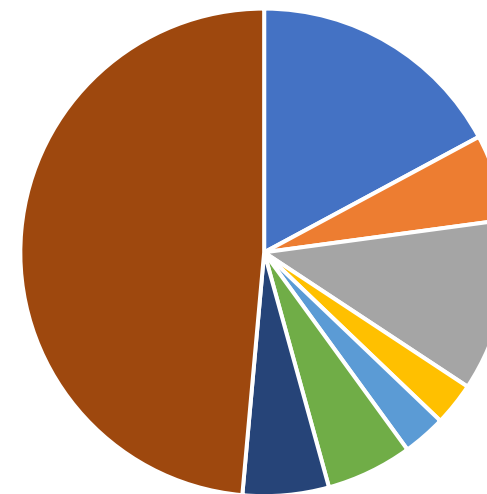
# Chipping Norton (Group 3)

AGE	CYP	%
0-4	2	6%
5-10	7	20%
11-15	21	60%
16-17	5	14%
18-24	0	0%
Total	35	100%

Chipping Norton Age ranges



Chipping Norton SEN



- Autistic Spectrum Disorder
- Hearing Impairment
- Moderate Learning Difficulty
- Physical Disability
- Severe Learning Difficulty
- Specific Learning Difficulty
- Speech, Language and Communication Needs
- unknown

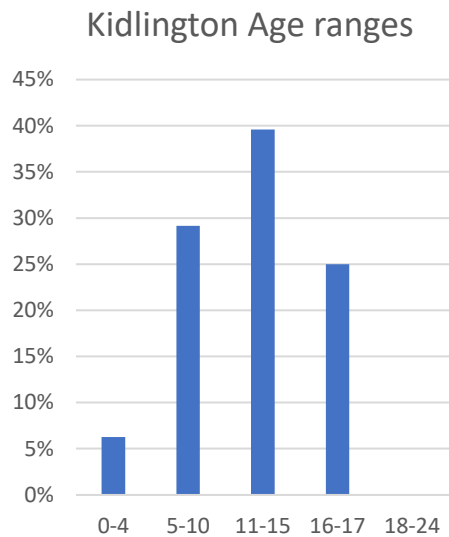
35 total CYP of these 18 are in special school, 11 of these have unknown disability on the register

Autistic Spectrum Disorder	6	17%
Hearing Impairment	2	6%
Moderate Learning Difficulty	4	11%
Physical Disability	1	3%
Severe Learning Difficulty	1	3%
Specific Learning Difficulty	2	6%
Speech, Language and Communication Needs	2	6%
unknown	17	49%
Grand Total	35	100%

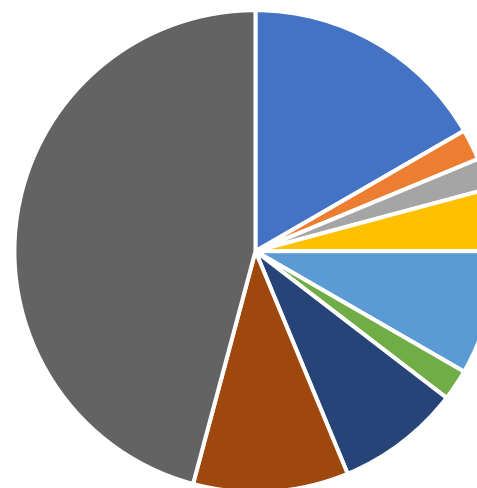


# Kidlington (Group 3)

AGE	CYP	%
0-4	3	6%
5-10	14	29%
11-15	19	40%
16-17	12	25%
18-24	0	0%
<b>Total</b>	<b>48</b>	<b>100%</b>



Kidlington SEN



- Autistic Spectrum Disorder
- Moderate Learning Difficulty
- Physical Disability
- Profound & Multiple Learning Difficulty
- Severe Learning Difficulty
- Social, Emotional and Mental Health
- Specific Learning Difficulty
- Speech, Language and Communication Needs
- Unknown

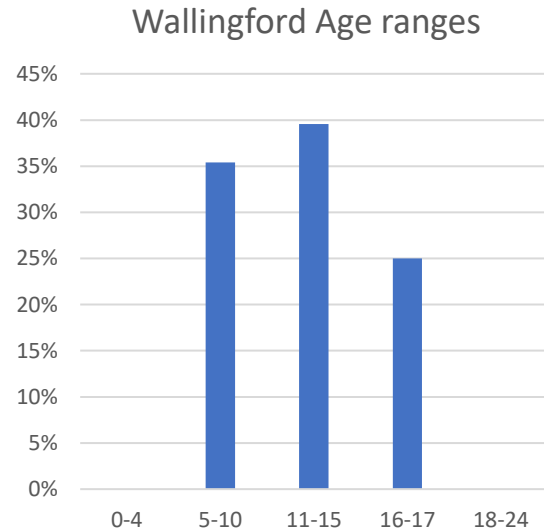
Autistic Spectrum Disorder	8	17%
Moderate Learning Difficulty	1	2%
Physical Disability	1	2%
Profound & Multiple Learning Difficulty	2	4%
Severe Learning Difficulty	4	8%
Social, Emotional and Mental Health	1	2%
Specific Learning Difficulty	4	8%
Speech, Language and Communication Needs	5	10%
Unknown	22	46%
<b>Grand Total</b>	<b>48</b>	<b>100%</b>

48 total CYP of these 27 are in special school, 14 of these have unknown disability on the register

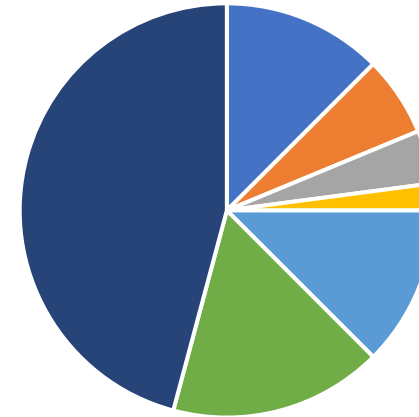


# Wallingford (Group 3)

AGE	CYP	%
0-4	0	0%
5-10	17	35%
11-15	19	40%
16-17	12	25%
18-24	0	0%
Total	48	100%



Wallingford SEN



- Autistic Spectrum Disorder
- Moderate Learning Difficulty
- Severe Learning Difficulty
- Social, Emotional and Mental Health
- Specific Learning Difficulty
- Speech, Language and Communication Needs
- unknown

Autistic Spectrum Disorder	6	13%
Moderate Learning Difficulty	3	6%
Severe Learning Difficulty	2	4%
Social, Emotional and Mental Health	1	2%
Specific Learning Difficulty	6	13%
Speech, Language and Communication Needs	8	17%
unknown	22	46%
Grand Total	48	100%

48 total CYP of these 21 are in special school, 9 of these have unknown disability on the register